

LHS 91: The intelligent power giant.

With power of 32kW, the LHS 91 is the tool for even the most demanding of heating applications. With this performance it is even capable of replacing many gas fired heaters.

Air heater

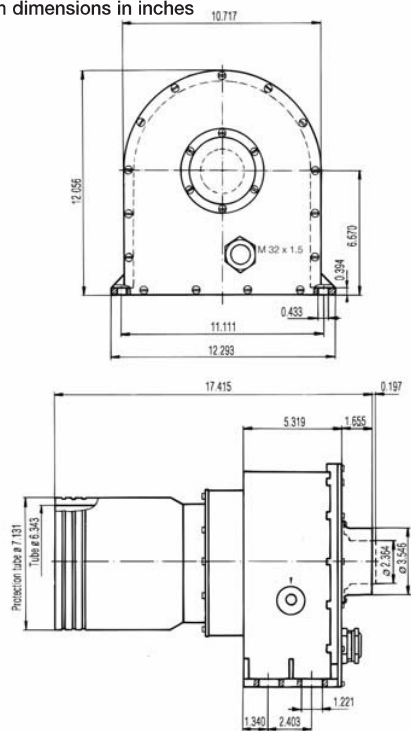
LHS 91



Technical data LHS 91

	BASIC	SYSTEM
Max. air outlet temperature °F	1202	1202
Min. air flow acc. to graph page 50		
Max. air inlet temperature °F	122	122
Max. ambient temperature °F	144	144
Weight lbs	29.1	29.8
Mark of conformity	CE	CE
Approval mark	Ⓢ	Ⓢ
Certification scheme	CCA	CCA
Protection classe I	Ⓡ	Ⓡ

Installation dimensions in inches



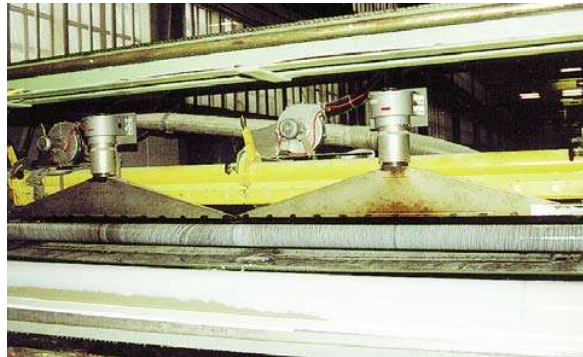
	V ~	3 × 230	3 × 400	3 × 480
	kW	28	11	32
BASIC	Order no.		100.764	100.766
SYSTEM	Order no.	140.357	140.358	140.356

Combination possibilities

Leister air heater with Leister blower at maximum heat power. Hot air temperature 0.12 in after air outlet, measured at the hottest point, at hose length 9.8 ft and unimpeded air outflow. Air flow at 68 F°, 14.7 psi compliant with ISO 6358.

Power Typ	Number LE × Power consumption kW	Air flow cfm	Temperature °F
ASO	2 × 32	2 × 148	932
AIRPACK	1 × 32	1 × 117	1004

Air flow and temperature values may deviate from those above based on the design of the entire hot air system (including nozzles, air hoses, environmental conditions).



Two air heaters and two blowers used to dry impregnated Eternit piping. Two wide slot nozzles ensure the air is evenly distributed.

Air heater

LHS 91 BASIC



Heating power not adjustable

Air heater

LHS 91 SYSTEM



Heating power or temperature steplessly adjustable with potentiometer or remote control interface



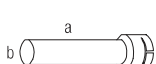
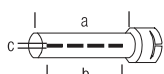
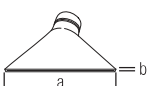
Protection against heating element and device overheating with alarm output

Remote control interface for external temperature controllers (Leister CSS, or PLC's)

Air Heaters

Accessories LHS 91

(Ø 6.34 in)

125.319		Flange connector, push-fit a = 7.56 in
107.230		Round nozzle, push-fit d = 3.94 in
107.233		Extension nozzle, push-fit (a x b) 15.75 x 3.94 in
107.243 105.869		Tubular nozzle, push-fit (a x b x c) 59.1 x 53.2 x 0.16 in 78.7 x 52.8 x 0.16 in
107.235 107.234 105.856 105.859		Wide slot nozzle, push-fit (a x b) 19.7 x 0.59 in 47.2 x 0.39 in 63.0 x 0.32 in 78.7 x 0.39 in

